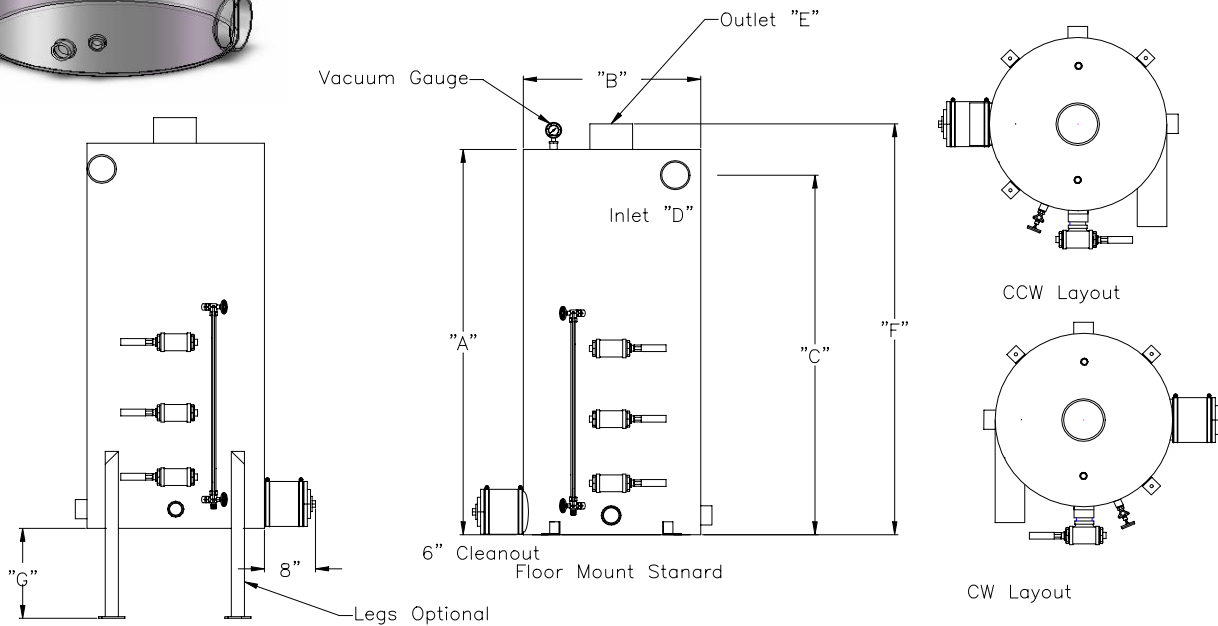


VLW-SERIES VAPOR/LIQUID SEPARATORS



Application: The VLW-Series vapor/liquid separator is capable of capturing entrained water from a process air stream. The separator is designed with a tangential inlet to utilize centrifugal forces to aid in the air/water separation. The water collects in the bottom of the separator while the air exits the large discharge pipe at the top.

Construction: The VLW-Series separator is fabricated from 1/8" and 3/16" carbon steel. The exterior is epoxy coated. The separator is built standard with a 6" cleanout in the bottom to allow access to the separator interior.



Dimensions Chart: (Dimensions in inches unless otherwise noted)

Part Number	A	B	C	D DIA.	E DIA.	F	G	Total Volume	Storage Volume	Shipping Weight
VLW-90	48	24	44	4	6	52	14	90 Gal Imp.	56 Gal Imp.	250 lb
VLW-140	60	27	56	6	6	64	14	140 Gal Imp.	74 Gal Imp.	320 lb
VLW-240	60	34.5	56	6	8	64	14	240 Gal Imp.	118 Gal Imp.	500 lb
VLW-480	60	48	56	8	8	64	14	480 Gal Imp.	236 Gal Imp.	700 lb



MID-ATLANTIC ENVIRONMENTAL EQUIPMENT

VLW-SERIES VAPOR/LIQUID SEPARATORS

Specifications Chart:

Specification:	VLW-90	VLW-140	VLW-240	VLW-480
Inlet (Inches):	4	6	6	8
Outlet (Inches):	6 MNPT	6 MNPT	8 FLANGE	8 FLANGE
Maximum Air Flow:	500 acfm	630 acfm	1050 acfm	2020 acfm
Maximum Water Flow	20 gpm	50 gpm	100 gpm	200 gpm
Maximum Operating Vacuum:	29" hg	29" hg	29" hg	29" hg
Pressure Drop at Maximum Air Flow: (dp=Constant x Velocity ²)	5.5" wc	5.5" wc	5.5" wc	5.5" wc
Removal Efficiency (% of incoming water > 10 Microns)	98%	98%	98%	98%

Standard Features:

- 6" Cleanout with plug.
- MLE Blue urethane exterior.
- Mounting brackets for bolting the separator to the ground.
- 1 1/2" Drain coupling with a 1/2" ball valve.
- Baffle welded into base to reduce cyclonic swirling of water.
- High-High-Level Alarm switch coupling.
- Inlet and outlet are MNPT.
- Coupling on top of separator for vacuum gage 1/2" FNPT.
- Brackets are standard to mount an optional demister element.

Options Table:

Option	Description
Orientation: CW or CCW	This determines which side of the separator the inlet pipe comes in on. CW indicates that the air flows around the separator in a Clockwise motion. CCW indicates Counter Clockwise motion.
Demister	A demister pad is installed in the separator and the inside pipe diameter is increased, which decreases the flow of air out of the separator. This will capture an additional 98% of the water that would otherwise be entrained in the air stream leaving the separator. The pad must be purchased for this option but the standard separator comes with the mounting brackets.
Epoxy Coated Interior	With this module the top is modified to allow the fabricator to provide a full weld on the interior of the tank and to paint the interior with a zinc primer and epoxy coating.
Pump Out Level	High and Low level couplings are installed for pump-out control.
Secondary Hi Hi Level Switch	A redundant High level switch coupling is installed to shut down the system on a High High Alarm if the first High High Level switch fails.
Sight Glass	Two couplings will be installed with a glass-sight glass assembly. The sight glass can be isolated with brass valves to be removed for cleaning during operation.
Stand	The separator will be elevated 30" above ground to assist in gravity discharge or to provide room underneath the separator for blowers and pumps. This replaces the standard foot mounts.
Stainless Steel	Each separator can be purchased in stainless steel, marine-grade aluminum or carbon steel.

Mid-Atlantic Environmental Equipment, Inc.

Is a proud distributor of environmental remediation systems manufactured by:

Maple Leaf Environmental Equipment, Ltd.