



# MID-ATLANTIC ENVIRONMENTAL EQUIPMENT

## MAE2-SITE LINK Telemetry System

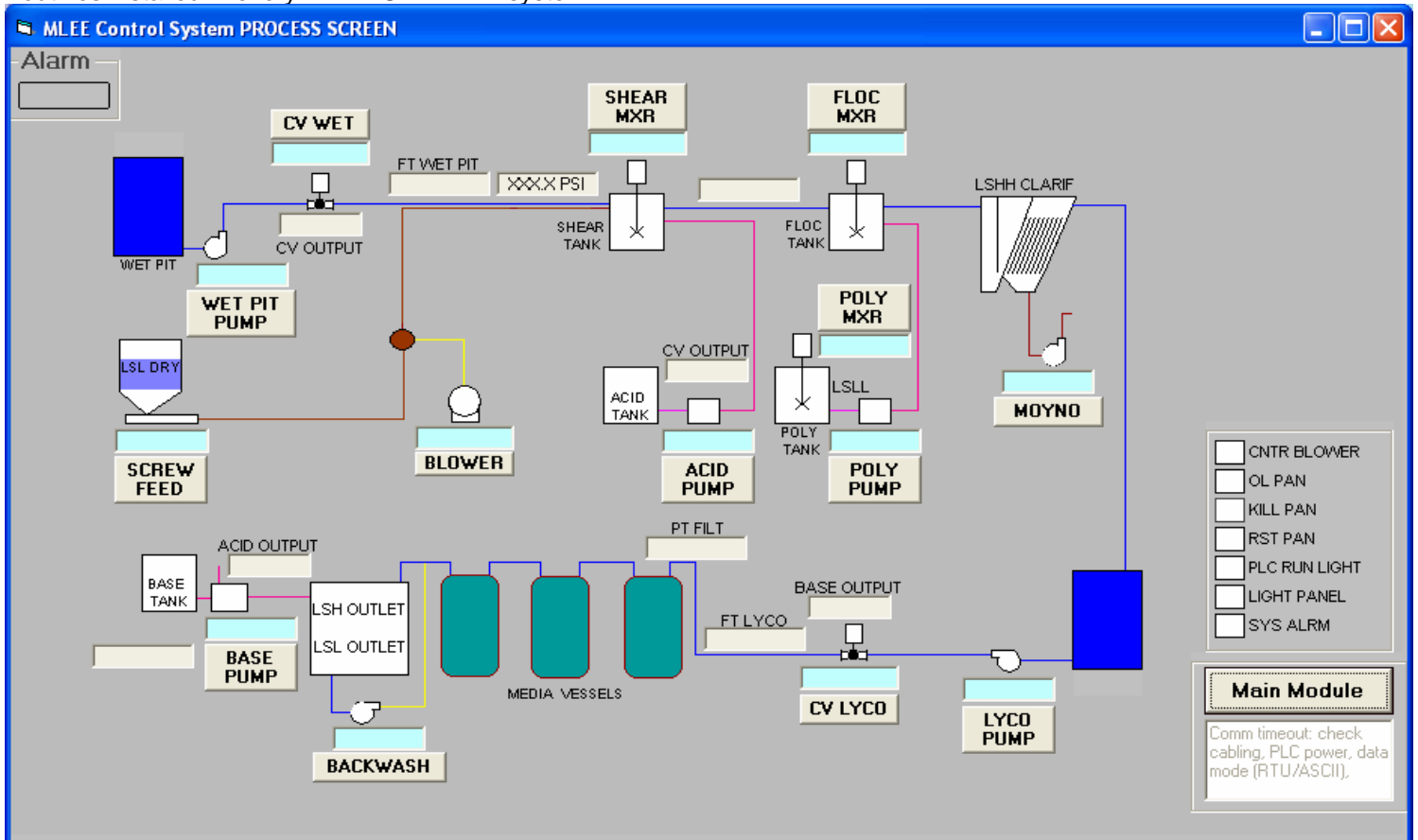
**Application:** MAE2-SITE LINK is a customized software program which provides a real-time link to a remediation system via a telephone line or the internet. Depending on the model MAE2-SITE LINK allows users to access their systems with their PC containing MAE2's customized software and a telephone line (SL-RP & SL-PP); through the internet on any PC with MS Explorer (SL-RW& SL-PW); or through the internet on any PC containing MAE2's customized software (SL-RW& SL-PW).

MAE2-SITE LINK can be provided with all MAE2 standard PLC panels (SL-PP & SL-PW) as well as many or our custom PLC panels.

Relay panels can also be equipped with MAE2-SITE LINK either from the factory or as a retrofit. Our standalone SITE LINK systems (SL-RW & SL-RP) are supplied with all the equipment required in a separate control box which will interface with a relay panel and deliver all the great benefits of MAE2-SITE LINK. This option is often favored when sites are prone to lightning strikes since a strike would not result in complete system shutdown.

Existing systems made by other suppliers can also benefit from a retrofit with our standalone MAE2-SITE LINK systems.

Virtually unlimited data storage can be provided with customized data-logging capability in addition to the standard datalog routines installed in every MAE2-SITE LINK system.





# MID-ATLANTIC ENVIRONMENTAL EQUIPMENT

## MAE2-SITE LINK Telemetry System

### Standard Features:

- MAE2-SITE LINK customized software program
- Start/Stop/Alarm Reset
- Alarm history screen with last 20 alarms c/w time and date \*
- Runtime screen with hour tracking for specified motors \*
- Customized process screen with P&ID display
- Date/time setting for PLC
- Screen for entry of process set points (timers, alarms etc)
- Manual run, manual stop, automatic setting for each motor with REMOTE GUARD manual operating protection \*
- Daily datalog summary report for the last 30 days for daily summary values \*
- Main datalog for continuous datalogging of analog signals at customer specified intervals \*
- E-MONITOR ready

\* some features not available or reduced functionality if used on relay panels

### MAE2-SITE LINK WEB:

- Provides access to system via wireless internet connection
- Includes instant alarm notification by e-mail to multiple email accounts including text messages to cell phones
- Software must be loaded onto customer PC

### MAE2-SITE LINK PHONE:

- Provides access to system via direct dial-up access for real-time information
- Requires analog phone line at customer's location and phone line to system
- Does not provide instant alarm notification unless a separate autodialer is installed in the control panel

### SL-SERVER (WEB ONLY):

- System can be accessed through any computer anywhere with internet access and Microsoft Internet Explorer
- Log on to customer system through MAE2 Website in place of loading software onto customer PC
- Available with SL-RW or SL-PW packages

### SL-EMONITOR:

- Provides a daily email with system status (alarms, analog values, hour meter readings and totalizer readings)
- Available with SL-RW, SL-PW, SL-RP or SL-PP packages

Model	Description	Initial Charge?	Monthly Charge?
SL-RW	SITE LINK WEB for interface with relay-based control panel.	Yes	Yes
SL-PW	SITE LINK WEB for interface with PLC-based control panel (PLC not included).	Yes	Yes
SL-RP	SITE LINK PHONE for interface with existing relay-based control panel.	Yes	No
SL-PP	SITE LINK PHONE for interface with existing PLC-based control panel (PLC not included).	Yes	No
SL-Server	One-time charge to access system via MS Explorer Browser on any PC with an internet connection. This is an additional option to the main modules above.	Yes	No
SL-EMonitor	EMonitor is an additional option to the main modules above.	No	Yes

Mid-Atlantic Environmental Equipment, Inc.

Is a proud distributor of environmental remediation systems manufactured by:

Maple Leaf Environmental Equipment, Ltd.