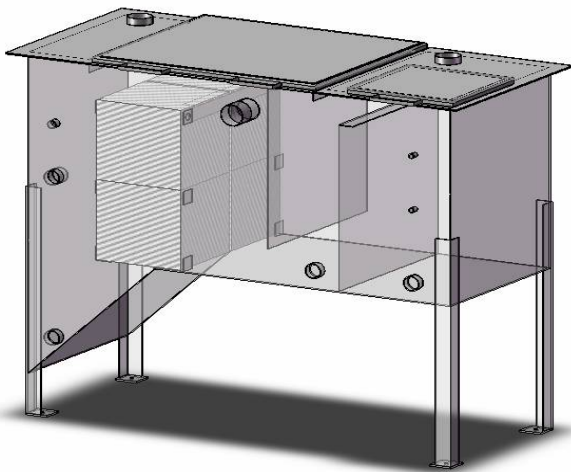
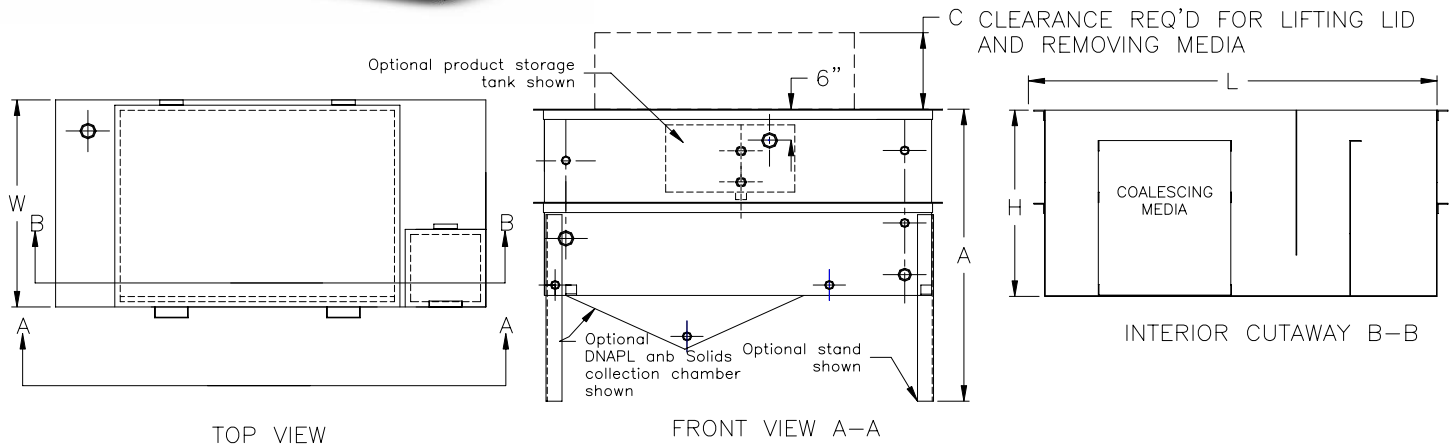


OWS-SERIES OIL/WATER SEPARATORS



Application: As the oil/water mixture is passed through the coalescing oil/water separator, larger oil droplets migrate to the surface to be collected and skimmed off. The media collects the smaller droplets until they are large and buoyant enough to float to the surface.

Construction: The standard OWS-Series oil/water separator is fabricated from carbon steel. For corrosion resistance, the interior is epoxy coated and the exterior is painted. Optional stainless steel and marine-grade aluminum construction are also available. A large lid allows access to the coalescing media and oil skimmer while a small lid allows access to the pump-out tank.



Dimensions:

Part Number	Width (in) "W"	Standard Height (in) "H"	Standard Overall Length (in)	Length with Extended Pump out (in)	Height with Elevated Pump out (in) "A"	Required Overhead Clearance (in) "C"	Standard Pump-out Volume (US Gal)	Extended Pump-out Volume (US Gal)	Elevated Pump-out Volume (US Gal)	Product Tank Volume (US Gal)
OWS-2	16	30	64	76	n/a	14	23	41	n/a	8.1
OWS-4	28	30	64	76	n/a	26	46	81	n/a	8.1
OWS-8	28	30	76	88	n/a	26	46	81	n/a	8.1
OWS-12	40	30	76	88	n/a	38	70	122	n/a	8.1
OWS-18	40	30	88	n/a	60	24	70	n/a	130	12.2
OWS-24	52	30	88	n/a	60	24	93	n/a	173	12.2
OWS-36	52	42	88	n/a	72	24	133	n/a	212	17.8
OWS-45	64	42	88	n/a	72	24	166	n/a	265	17.8
OWS-75	100	42	88	n/a	72	24	266	n/a	425	17.8



MID-ATLANTIC ENVIRONMENTAL EQUIPMENT

OWS-SERIES OIL/WATER SEPARATORS

Rated US GPM (Based on 25 micron particles at 65 deg F and design safety factor of 1.25):

Part Number	HQ PAC		1/2" Packing		3/4" Packing		1 1/4" Packing		Slant Plate	
	Oil (0.9)	Gas (0.72)	Oil (0.9)	Gas (0.72)	Oil (0.9)	Gas (0.72)	Oil (0.9)	Gas (0.72)	Oil (0.9)	Gas (0.72)
OWS-2	9.7	27.0	5.0	14.1	3.5	9.8	2.3	6.3	0.9	2.5
OWS-4	19.3	54.0	10.1	28.2	7.0	19.7	4.5	12.7	1.8	4.9
OWS-8	38.6	108.1	20.2	56.5	14.0	39.3	9.1	25.4	3.5	9.8
OWS-12	57.9	162.1	30.3	84.7	21.1	59.0	13.6	38.1	5.3	14.7
OWS-18	86.9	243.2	45.4	127.1	31.6	88.4	20.4	57.1	7.9	22.1
OWS-24	115.8	324.2	60.5	169.5	42.1	117.9	27.2	76.1	10.5	29.5
OWS-36	159.2	445.8	68.1	190.7	47.4	132.6	30.6	85.7	11.8	33.2
OWS-45	199.0	557.3	85.1	238.4	59.2	165.8	38.2	107.1	14.8	41.5
OWS-72	318.5	891.7	136.2	381.4	94.7	265.3	61.2	171.3	23.7	66.3

NOTES: Larger spaced packing will not plug as quickly as closely spaced packing allowing longer intervals between maintenance requirements. The slant plate coalescer should be used in applications with heavy sludge loads because it does not foul quickly.

Standard Features:

- Interior is epoxy coated. Exterior is painted MLE Blue over zinc primer (except stainless steel and marine-grade aluminum option).
- Sacrificial anode to prevent corrosion of tank.
- 11 AWG carbon-steel construction.
- Sludge containment section.
- Adjustable oil skimmer.
- Water underflow/overflow weir design.
- Easy removal of coalescing media for cleaning.
- High Alarm Level coupling and Pump High/Low Level coupling in the pump out chamber.

Options:

- DNAPL Separation
- Stainless steel construction
- Marine-grade aluminum construction
- Stand
- Oversized pump out
- Product storage tank
- Custom size
- Custom media

Mid-Atlantic Environmental Equipment, Inc.

Is a proud distributor of environmental remediation systems manufactured by:

Maple Leaf Environmental Equipment, Ltd.